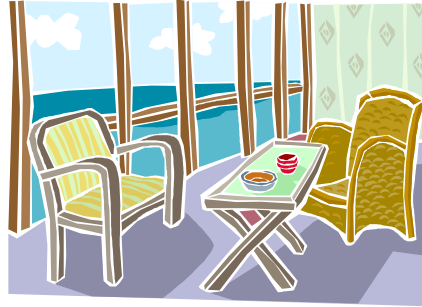


Snowing outside? NOW is the time to plan your new deck or three season porch!



Wouldn't you love to lounge on your new deck or enjoy a mosquito-free three season porch this summer? Well, did you know it takes several weeks to plan a deck or three season porch project? So, right now, while you are stuck indoors with the *latest spring snowstorm*, is the best time to start planning!

Why does it take so long to start a deck or three-season porch project?

You will need to research the different materials, styles, and costs of your project. A designer may draw up plans for you. Do you want cedar or the new low maintenance materials? Or a mixture of both? There will be decisions about the framing, the railing system, ramps or steps. What kind of finish or stain do you prefer? Do you want decorative finials? Where will the footings go? If you are building a three season porch, what roof design and materials will you want? Will you need any easement permissions from the city? Will you need to upgrade your landscaping or add a retaining wall?

The design must be drawn, approved by you, and submitted to the building inspector for approval. A structural engineer will need to approve plans for a three season porch. Each city or county building inspection department has a different turn-around time; usually 7 to 14 business days. **Then the materials must be ordered and delivered to your site.** The cement truck will be ordered and footings poured. THEN, the actual building of your deck or porch can start!

As you can see, building a deck or porch presents a complex set of decisions. At Mueller-Dahl Remodeling, we would love to help you through every step of the process! We have experience with many materials and styles of decks and porches. We are very "picky" about our structural framing process and have been praised by local officials for the integrity and strength of our decks. And our clients love the BEAUTY and usefulness of additional outdoor space!

Contact Mueller-Dahl Remodeling TODAY for a free consultation to begin planning your new deck or porch!

- Miriam Mueller, March 17, 2006

Mueller Dahl Remodeling

527 Professional Drive, Suite B
General Contractor License #BC-200441755

Northfield, MN 55057
Phone: 507 663-1428
Fax: 507 663-7206

contact@muellerdahl.com
www.muellerdahl.com